

भारत सरकार
(पत्तन, पोत परिवहन और जलमार्ग मंत्रालय)
दीपस्तंभ और दीपपोत निदेशालय
“दीप भवन”, गांधीनगर,
कडवंत्रा डाक,
कोचीन – 682 020.



Government of India
(Ministry of Ports, Shipping and Waterways)

1. **Directorate of Lighthouses and
Lightships**

“Deep Bhavan”, Gandhinagar,
Kadavanthara P.O.,
Cochin - 682 020.

फोन सं. / Ph. No. : 0484 2205720 फैक्स / Fax: 0484 2206608 ई-मेल / e-mail : dte-koc@gov.in

सं. / No. MS-Coc-02003/1/2019-MS

तिथि / Date: 20.07.2021

कोटेशन आमंत्रण सूचना / NOTICE INVITING QUOTATION

For & on behalf of the President of India, The Director of Lighthouses and Lightships, Deep Bhavan, Cochin – 20 invites sealed quotations from reputed OEM or Authorized Service Representatives for Provision of EAMF Panel at Azhikode Lighthouse, under Cochin Directorate. The details are as under:-

क्रम सं. SL. No.	विषय/Subject	विवरण / Description
1	कार्य का नाम / Name of Work	Provision of EAMF Panel at Azhikode Lighthouse, under Cochin Directorate
2	स्थान / Location	Azhikode Lighthouse, Azhikode P.O., Kodungallur (via), Thrissur District, Kerala State, Pin: 680 666
3	अनुमानित लागत / Estimated Cost	₹ 1,65,200/-
4	बयाना राशि / Earnest Money Deposit (EMD)	₹ 3,304/-
5	कोटेशन के डाउनलोड की अवधि / Period of Download of Quotation	21.07.2021 (0900 hours) to 04.08.2021(1400 hours)
6	कोटेशन प्रस्तुत करने की अवधि / Quotation Submission Period	21.07.2021 (1400 hours) to 04.08.2021 (1500 hours)
7	कोटेशन के खोलने की तिथि / Date of Opening of Quotation.	04.08.2021 (1600 hours)

- 1) The details of work are available in the notice inviting quotation document which can be downloaded from website Central Public Procurement Portal(CPPP), <http://eprocure.gov.in/epublish> and www.dgil.nic.in.
- 2) Bidders have to submit the refundable EMD (₹ 3,304/-) in the form of Demand Draft/ Fixed Deposit Receipt (in original) from any commercial/nationalized banks, drawn in favour of “Director, Lighthouses and Lightships, Cochin”, Payable at Cochin.
- 3) Sealed Quotation with EMD should be submitted to the Director, Directorate of Lighthouses and Lightships, Cochin – 20 on or before the last day of quotation submission period failing which the quotation shall be liable to be rejected. Director shall not be responsible for any delay or loss, due to postal/Courier Services.
- 4) NSIC/MSME registered firms are exempted from paying EMD.


निदेशक / DIRECTOR

SCOPE OF THE WORK

- i. Supply of the EAMF panel to the site, Azhikode Lighthouse, Azhikode P.O., Kodungallur (via), Thrissur District, Kerala State, Pin: 680 666, Including Loading, Unloading and Freight charges.
- ii. Installation, Integration and Commissioning of the EAMF panel should be carried out by your service Engineer after installation of the DG sets at site.
- iii. Supply of the Electronic Auto Mains Failure Control Panel for 3Phase Mains and 2Nos. Single Phase 25kVA, DG sets, with following specifications:
 - Cubicle type, base mounting control panel with hinged doors, bottom gland plate, fabricated using 16SWG CRCA sheet, powder coated metallic paint with 2 coats of metal primer.
 - Copper Bus bars with all switchgears such as MCBs, power contactors, control relays, selector switches, etc.,
 - Auto Phase Changer for EB supply
 - Load Distribution Terminals and Earth Terminals at the bottom/side for cable terminations with appropriately rated MCBs (as per site requirements)
 - Microprocessor based AMF module incorporating all necessary protections for DG set and Mains, start/stop logics, Standard interlocks for each Alternator and Engine, interlocks for operation of Mains & Choice of either one of the DG sets (Auto Source Changer), alternate source (DG set) selection during normal operation of 8 hours with manual choice through selector switch,
 - Visual alarms for warnings and faults(annunciation LED lamps),
 - Metering (voltage, current, frequency, DG set hours run, battery parameters) with appropriate rating of CTs,
 - Panel indications (Load on Mains/DG Set 1/DG Set 2),
 - Relay control circuitry for power contactors and instrumentation,
 - Individual 12V Battery charging for both batteries of DG sets,
 - Auto/Manual/Test Options (selector rotary switch),
 - Emergency hooter for failure of operation of DG sets,
 - and Manual Bypass.

All above items to be of reputed make as and where required conforming to relevant Indian standards.

Distribution of Loads for Lighting circuits and Power circuits as per the schematic diagram enclosed through individual breakers for both Single Phase and Three Phase Loads with array of terminals for load connections.

- iv. The EAMF panel should have Warranty of 2 years and power contactors for one year. During warranty period any fault occurring in the EAMF panel should be attended by the dealer / OEM without fail.

बोलीकर्ता / BIDDER


निदेशक / DIRECTOR

TERMS AND CONDITIONS

- i. Your quotation may be forwarded in a sealed cover duly super scribed " Provision of EAMF Panel at Azhikode Light-house, under Cochin Directorate" so as to reach this office on or before 1500 hours on 04.08.2021, which shall be opened on 04.08.2021 (1600 hours).
- ii. Your rate shall indicate the basic cost and other taxes separately.
- iii. The spares replacement should be of standard make and confirm to the standard specification as applicable.
- iv. All items mentioned in schedule are good and working condition, if desired the company representative may visit for observing condition of the items. Warranty in respect of each item shall clearly be specified.
- v. Technical brochure, Drawing, Specification sheets of the product shall be furnished along with the quotation, as per OEM.
- vi. Attending the system on reporting of its failure/defect on phone/e-mail; identify the fault and repair equipment within 3 working days.
- vii. The company and service engineers should be possessing minimum 3 years experience in the relevant field.
- viii. The following documents to be submitted along with sealed quotation:
 - 1) NSIC/MSME registration certificate or EMD.
 - 2) Work Experience of equivalent or higher value of NIQ(Supply orders/ Work completion etc.)
 - 3) Last 3 years income tax returns.
 - 4) PAN card.
 - 5) GST Registration Certificate.

Non Submission of any of above credentials shall render the quotation liable for rejection.
- ix. The L1 bidder shall be decided on the consolidated lowest total of the schedule of work.
- x. Successful bidder have to submit performance guarantee equivalent to 3% of the tendered amount/value.
- xi. The work shall be carried out to the entire satisfaction of the Director or his representative.
- xii. The payment shall be made as below:
 - 1) 70% payment of the contract amount shall be made within 30 days from the supply of the item and satisfactory installation/ completion of work.
 - 2) 30% payment of contract amount shall be made after satisfactory observation/ performance of the system for three (03) months.
- xiii. The rates should remain valid for 60 days from the date of opening of quotations. Supply of items shall be made within 60 days from the date of supply order.
- xiv. The right to reject your offer either in part or in full without assigning any reasons vests with the undersigned.
- xv. The Director, Directorate of lighthouses and Lightships, Port Blair reserves the right to cancel the contract if the contractor is found not working according to the terms and conditions, and he will be liable to make good of the losses of the department due to the breach of any of the terms and conditions of the contract for the period up to the date of actual termination of the contract.
- xvi. The performance guarantee shall be released only after completion of warrantee period i.e. 02 years

Name and Address of the Consignee and Paying Authority	Contact Phone / Fax / E-mail	Consignment to
The Director, Directorate of Lighthouses & Lightships, "Deep Bhavan", Gandhinagar, Kadavanthra, Cochin – 682 020, Kerala State.	Phone: 0484-2205720 Fax: 0484-2206608 E-mail: dte-koc@gov.in	The Assistant Engineer (Electronics) Azhikode Lighthouse, Azhikode P.O., Kodungallur (via), Thrissur District, Kerala State, Pin: 680 666.

बोलीकर्ता / BIDDER


 निदेशक / DIRECTOR

अनुसूचि / SCHEDULE

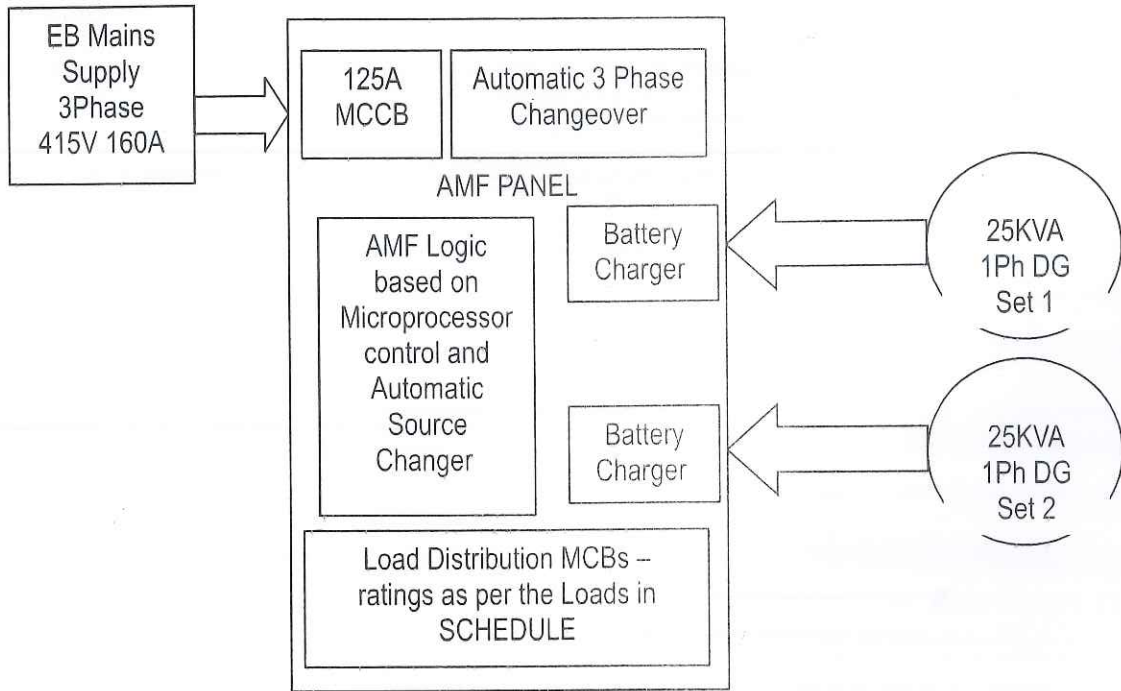
कार्य का नाम / Name of Work :- Provision of EAMF Panel at Azhikode Lighthouse under Cochin Directorate

क्रम सं. S. No.	वस्तु का विवरण Description of items	मात्रा Quantity	रेट Rate	GST (In %) and in ₹	यूनिट Unit	रकम Amount in ₹
1	Supply of the Electronic Auto Mains Failure Control Panel for 3Phase Mains and 2Nos. Single Phase 25kVA, DG sets, and Load Distribution Terminals with appropriately rated MCBs (as per site requirements) comprising of Standard interlocks for each Alternator and Engine, interlocks for operation of Mains & Choice of DG sets with manual choice included, along with visual alarms for warnings and faults, metering (voltage, current, frequency, DG set hours run, battery parameters), panel indications (Load on Mains/DG Set 1/DG Set 2), control circuitry, Batteries charging for both batteries of DG sets, Auto/Manual/Test Options, emergency hooter, etc., along with manual bypass. All above items to be of reputed make as and where required conforming to relevant Indian standards. Distribution of Loads for Lighting circuits and Power circuits as per the schematic diagram enclosed through individual breakers for both Single Phase and Three Phase Loads with array of terminals for load connections. Installation, Integration and Commissioning inclusive. (Warranty - 2 years for EAMF panel and one year for power contactors)	One set			set	
2	Loading, Unloading and Freight charges of the EAMF Panel from OEM to Azhikode Lighthouse (as per actuals)	One Job			Job	
					Grand Total	
	Total in Words:					

बोलीकर्ता / BIDDER


निदेशक / DIRECTOR

SCHEMATIC DIAGRAM – EAMF PANEL FOR AZHIKODE LIGHTHOUSE



SCHEDULE

Load Distribution to:-

1. 40A FP MCB DGPS, RCS and Automation
2. 40A FP MCB Power House Lighting
3. 40A FP MCB Inspection Quarter Lighting
4. 40A FP MCB Air Conditioning
5. 40A DP MCB Tower Lighting with Power Sockets
6. 20A DP MCB Main Light (HID Cluster)
7. 20A DP MCB Street lighting
8. 20A DP MCB Coil Hut
9. 20A DP MCB Sump Motor Water Pump
10. 20A DP MCB Visitors Toilet & Security Room
11. 20A DP MCB Parking Area
12. 40A DP MCB Spare Temporary Power House
13. 40A FP MCB Spare
14. 20A DP MCB Spare

बोलीकर्ता / BIDDER

निदेशक / DIRECTOR